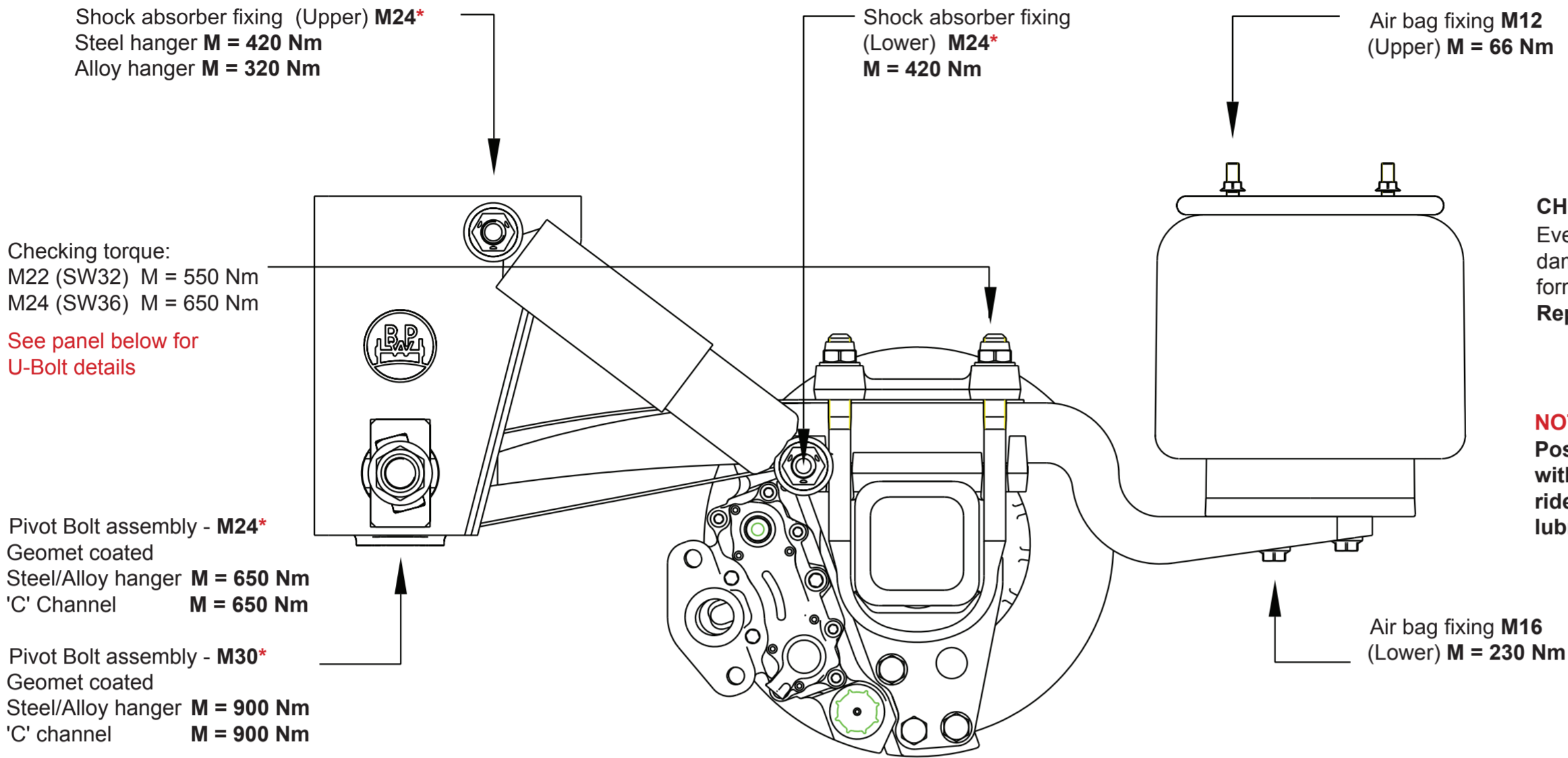


AIRLIGHT 2 - TIGHTENING TORQUES

70mm WIDE SPRING



CHECK AIR BAGS EVERY 6 MONTHS
Every 6 months check air bags for external damage, surface cracking, abrasion, crease formation, trapped foreign bodies etc.
Replace air bags in the event of damage.

NOTE:
Positions marked * must be tightened with the suspension set at the correct ride height. Use ECO-Li Plus grease to lubricate the threads stated.

AIRLIGHT 2 - U-BOLT

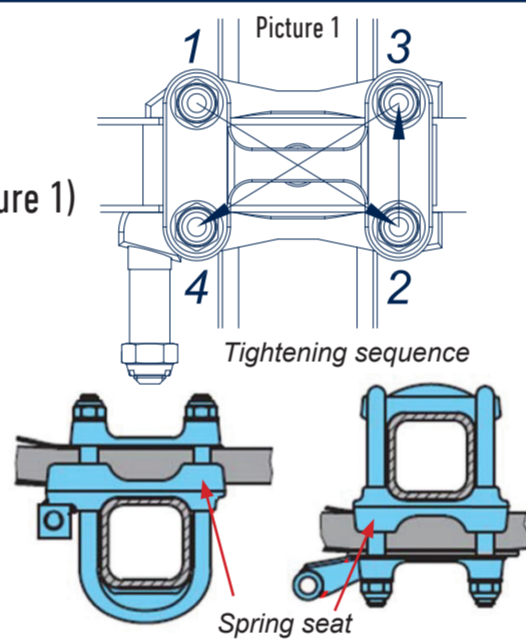
70mm WIDE SPRING

Whenever a BPW axle is assembled with M22mm U-bolts

- U-bolts must be replaced in pairs.
- All threads and nut/washer interfaces must be lubricated with ECO-Li Plus grease.
- U-bolts must be tightened to 550 Nm + 90° tightening angle as per sequence (picture 1)
- U-bolts must be retightened to 550 Nm before completing 2500Kms, and a First Service Inspection form returned to BPW Transport Efficiency
- U-bolts must have torque checked (550 Nm) during service inspections annually (under extreme conditions e.g. off road use with more frequency)

Whenever a BPW axle is assembled with M24mm U-bolts

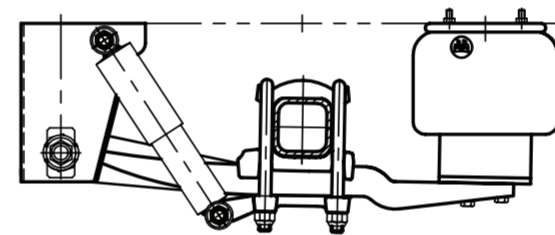
- U-bolts must be replaced in pairs.
- All threads and nut/washer interfaces must be lubricated with ECO-Li Plus grease.
- U-bolts must be tightened to 650 Nm as per sequence (picture 1)
- U-bolts must be retightened to 650 Nm before completing 2500Kms, and a First Service Inspection form returned to BPW Transport Efficiency
- U-bolts must have torque checked (650 Nm) during service inspections annually (under extreme conditions e.g. off road use with more frequency)



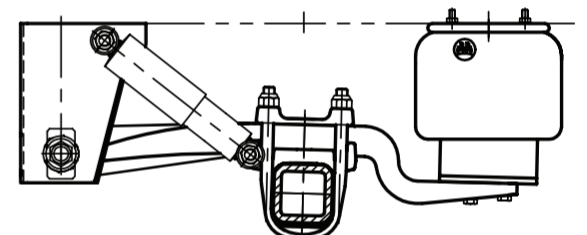
With all clamped suspensions, the **spring seat** that is sandwiched between the axle and the trailing arm must be replaced as it has serrations where it sits around the axle which contribute to the clamping force.

SUSPENSION TYPES AIRLIGHT 2

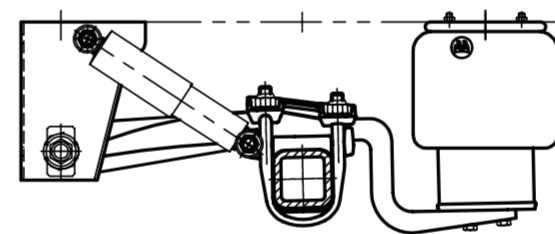
UNDERSLUNG - ALU



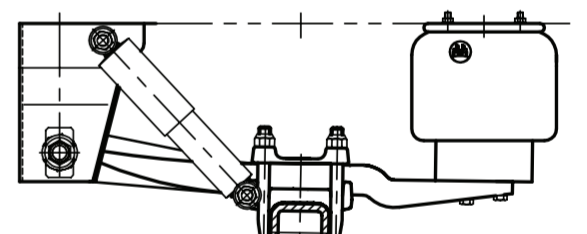
OVERSLUNG - ALM



OVERSLUNG - ALMT

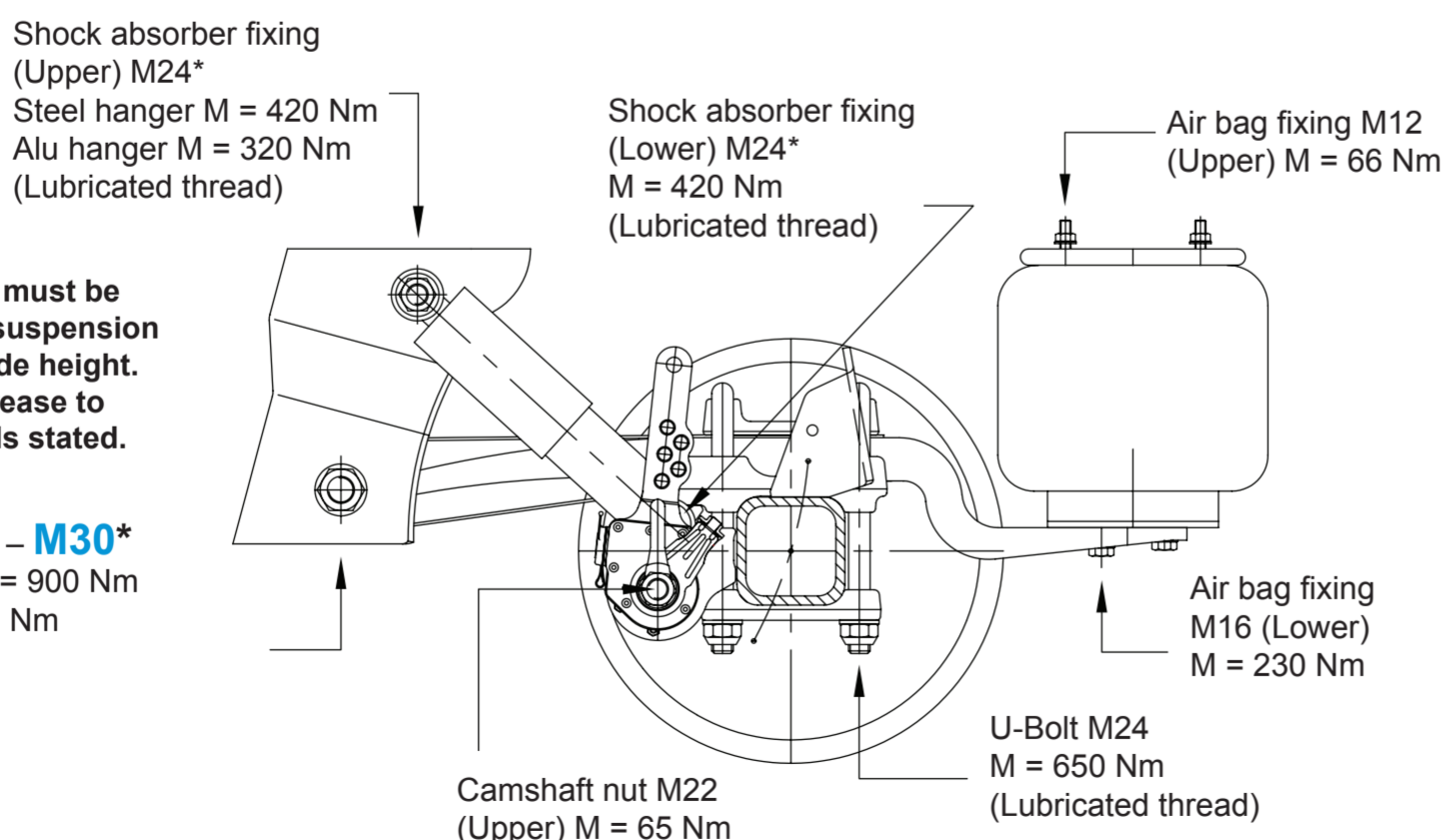


OVERSLUNG - ALO



AIRLIGHT 1 - TIGHTENING TORQUES

100mm WIDE SPRING



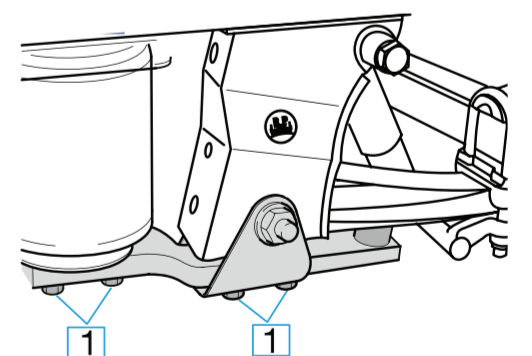
NOTE:
Positions marked * must be tightened with the suspension set at the correct ride height. Use ECO-Li Plus grease to lubricate the threads stated.

AXLE LIFT

AXLE LIFT (Lever Type)

Check M16 bolts **1** on the lever arm to make sure they are tight. If necessary, tighten with a torque wrench. Tightening torques - M16 = 230 Nm.

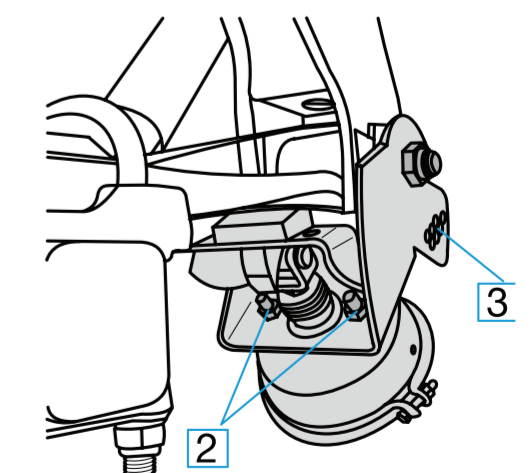
Check for wear on the bump stop of the lever arm and make sure it is secure - M12.



AXLE LIFT (Diaphragm Type)

Check M16 Cylinder bolts **2** to make sure they are tight. If necessary, tighten with a torque wrench. Tightening torques - M16 = 180-210 Nm.

Check M12 stop bolts **3** to make sure they are tight.



In all cases torque check after first 2 weeks of operation and then annually (under extreme conditions e.g. off road use, with more frequency).

FOR MORE DETAILED INFORMATION PLEASE REFER TO THE BPW MAINTENANCE MANUAL WHICH IS AVAILABLE TO DOWNLOAD